

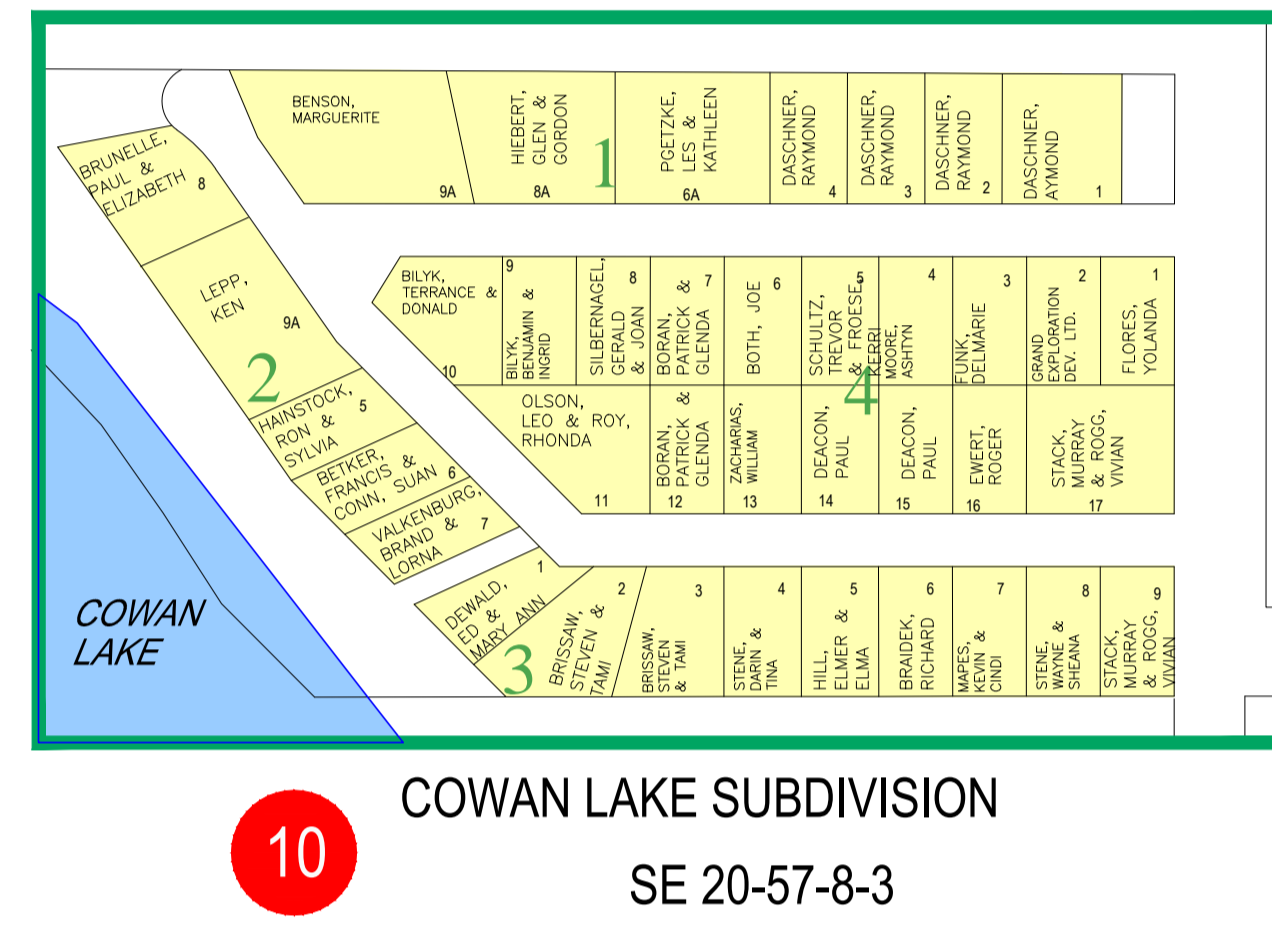
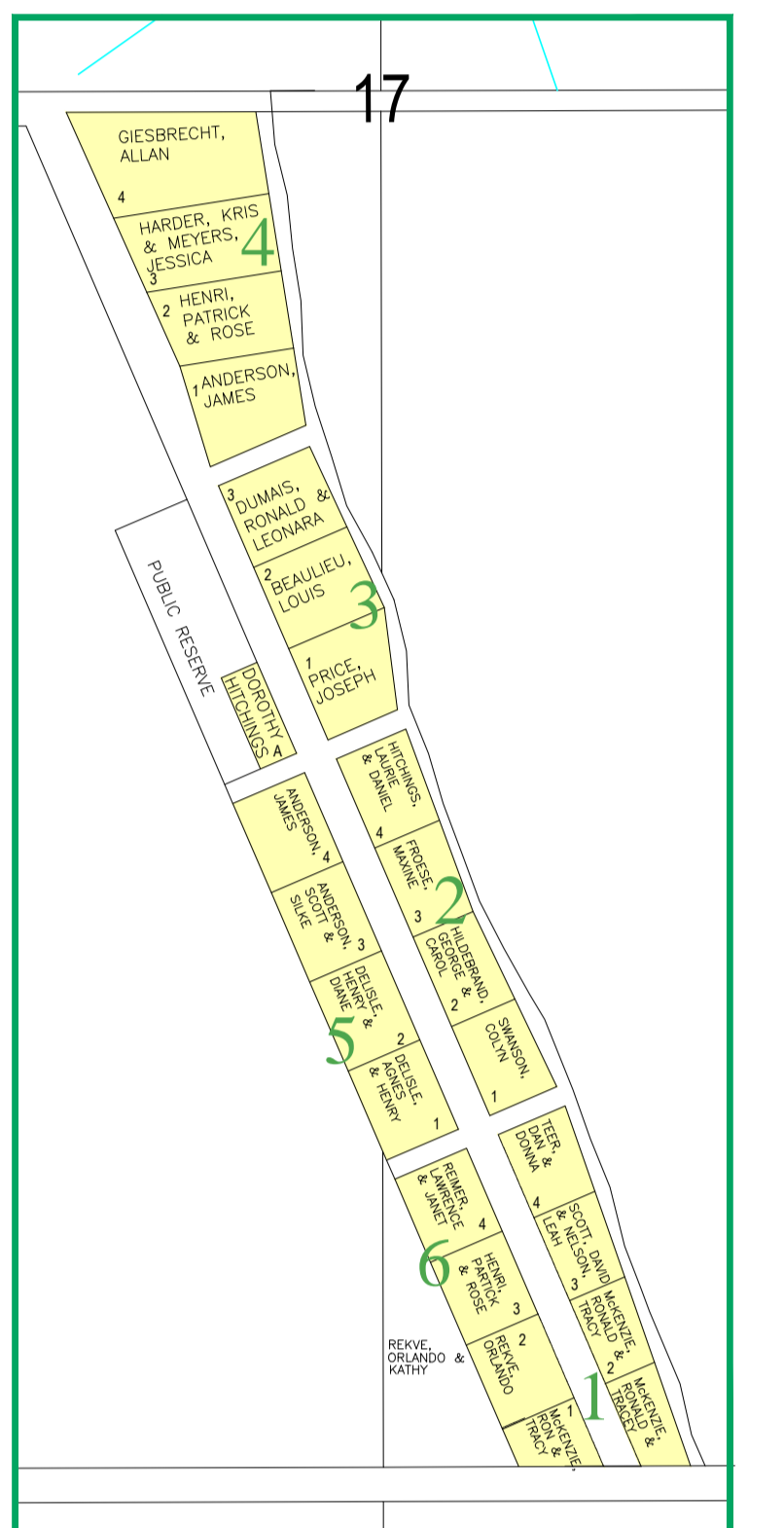
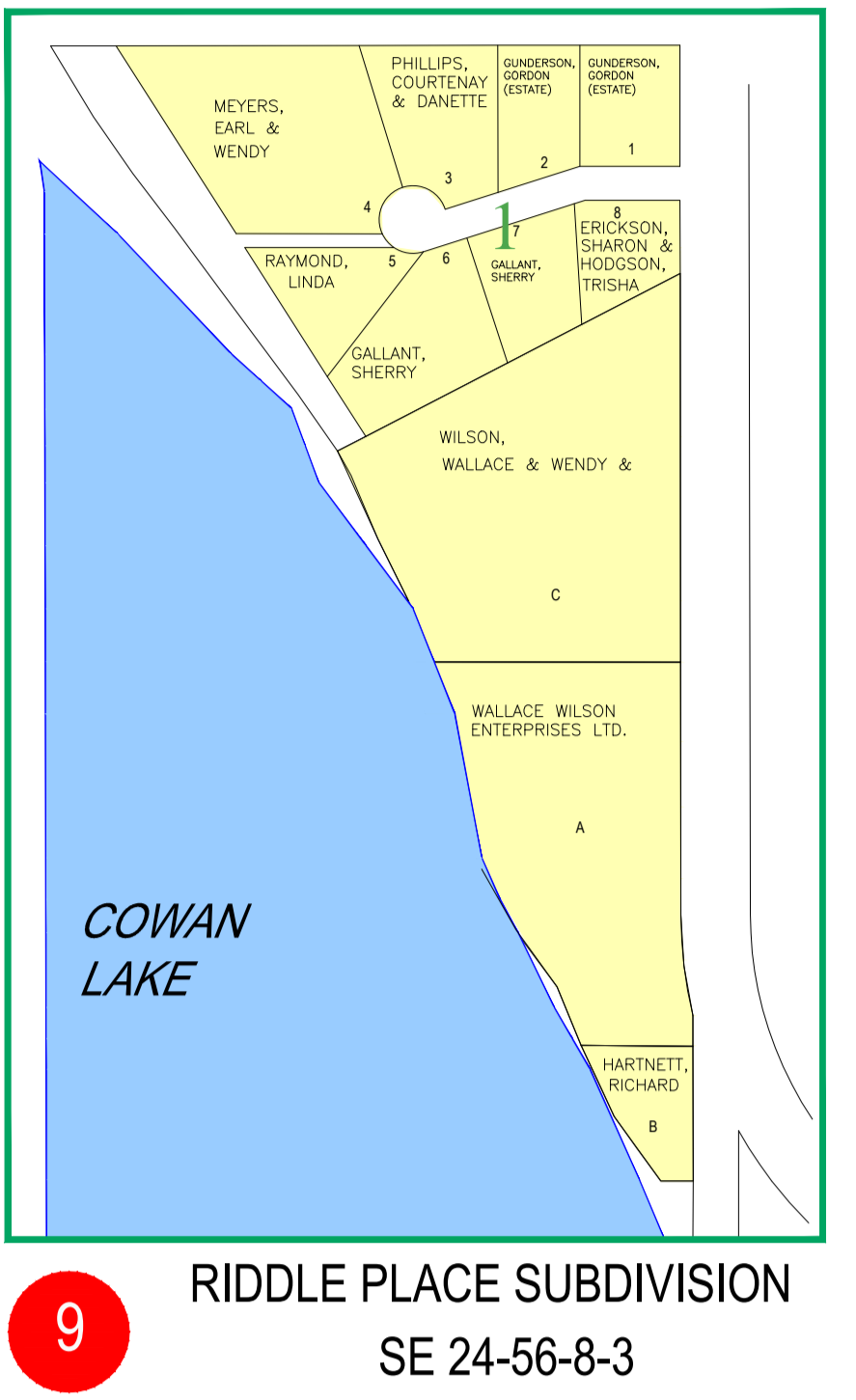
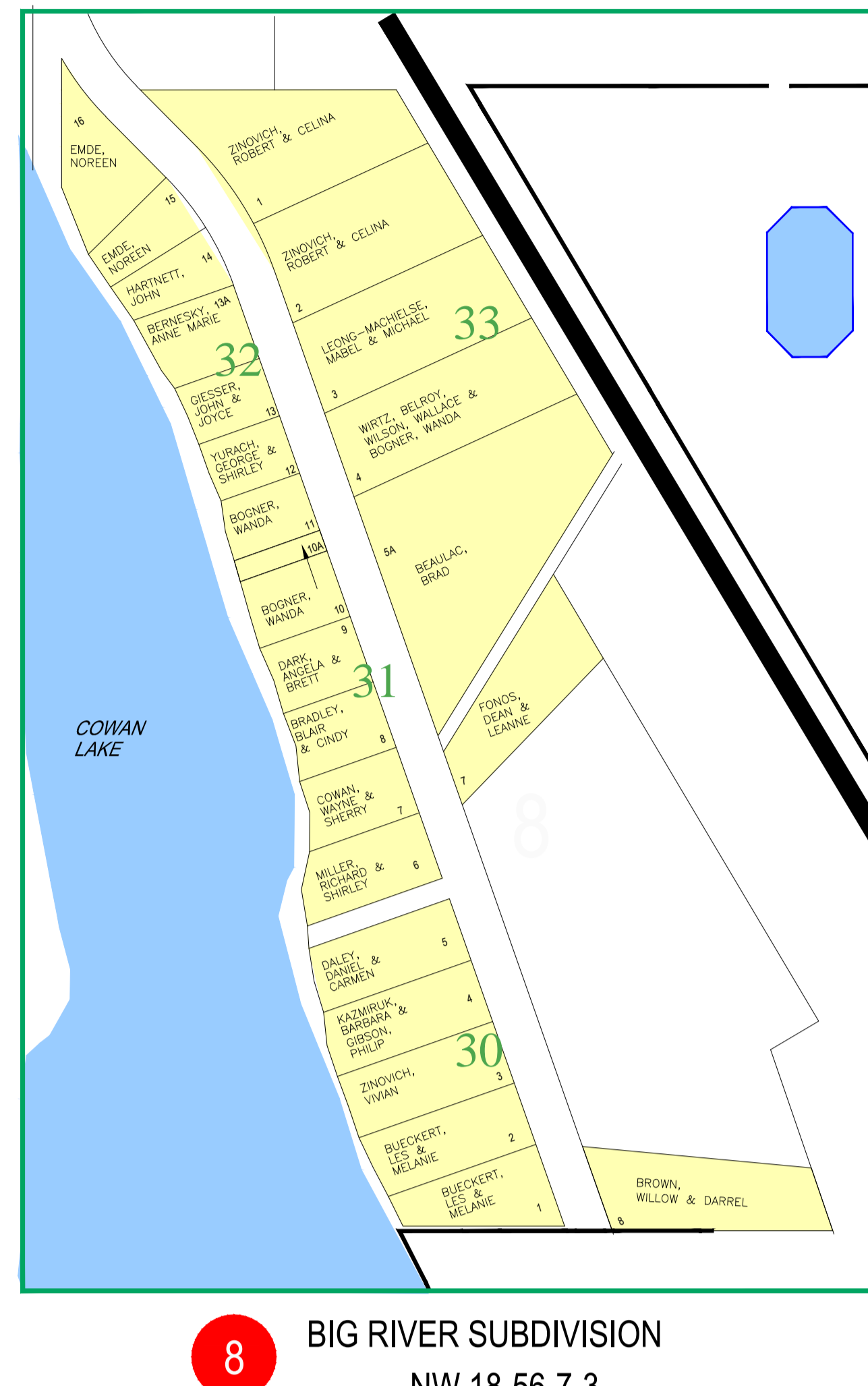
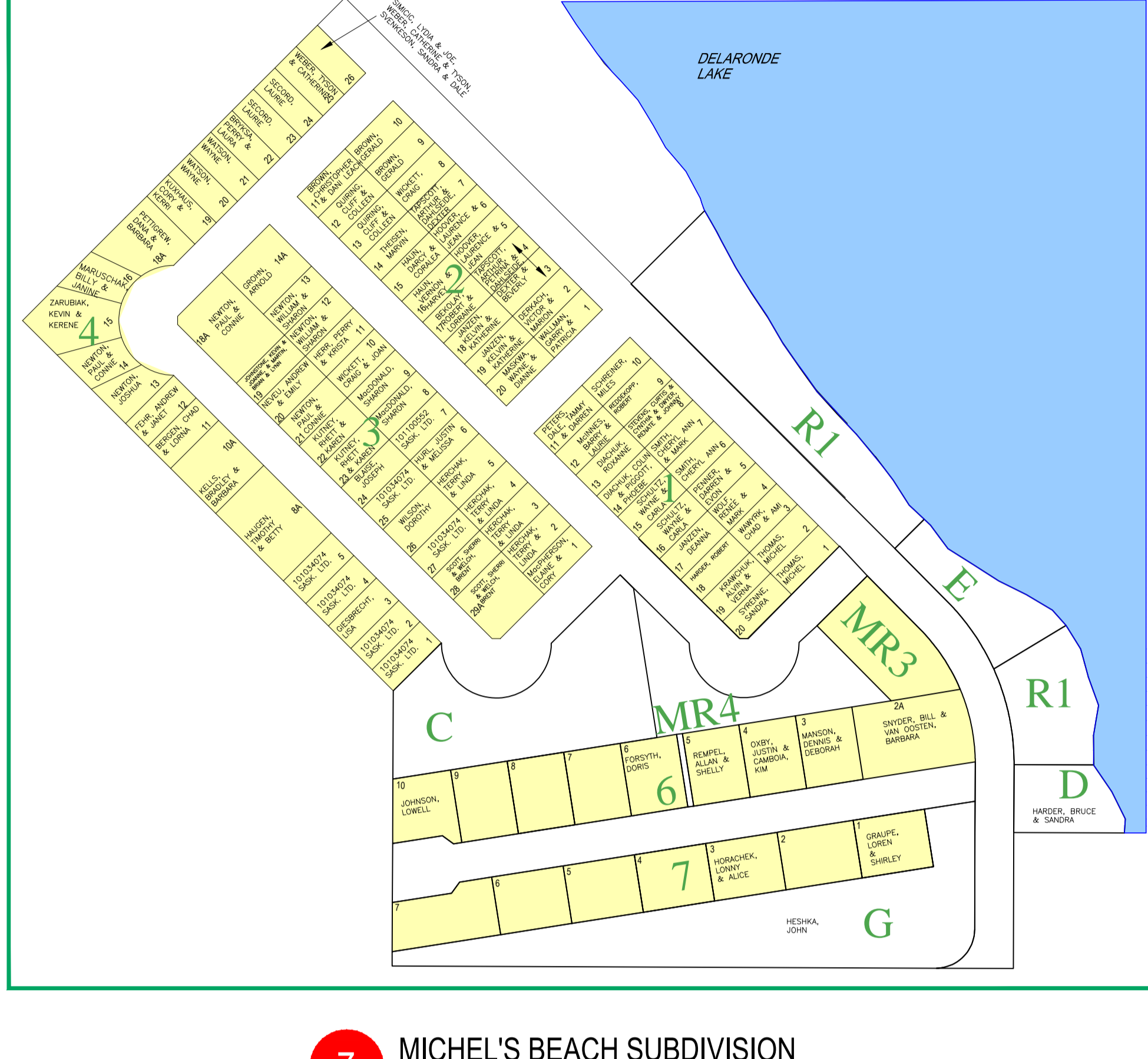
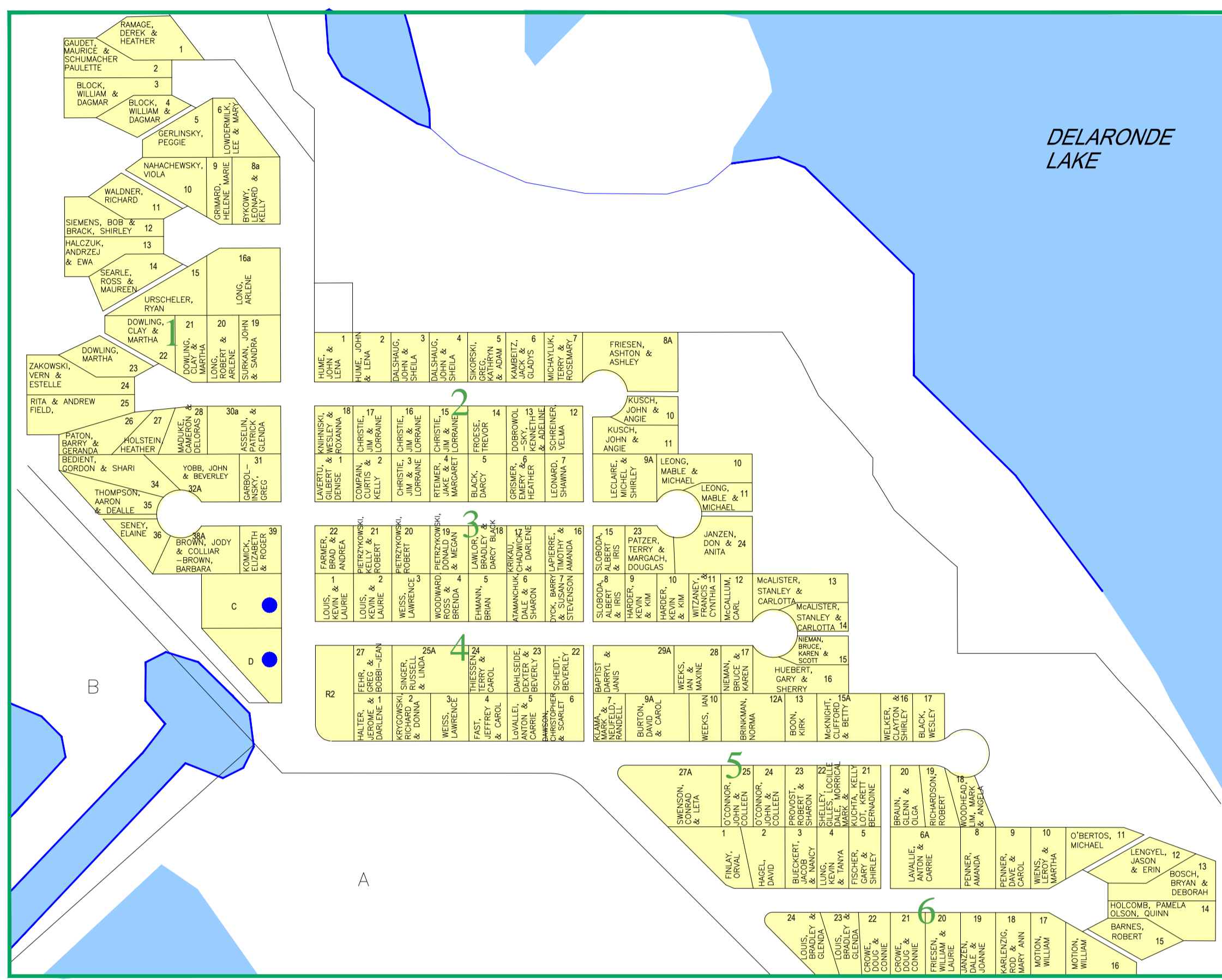
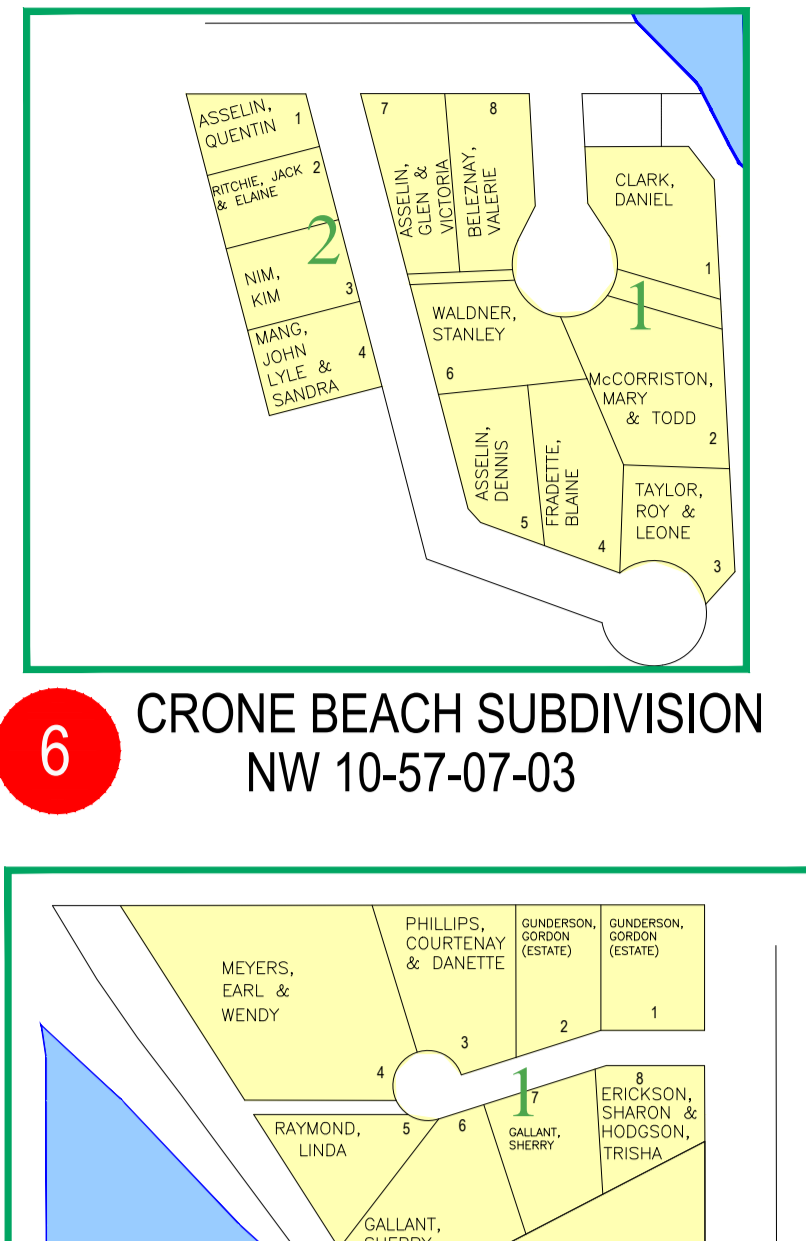
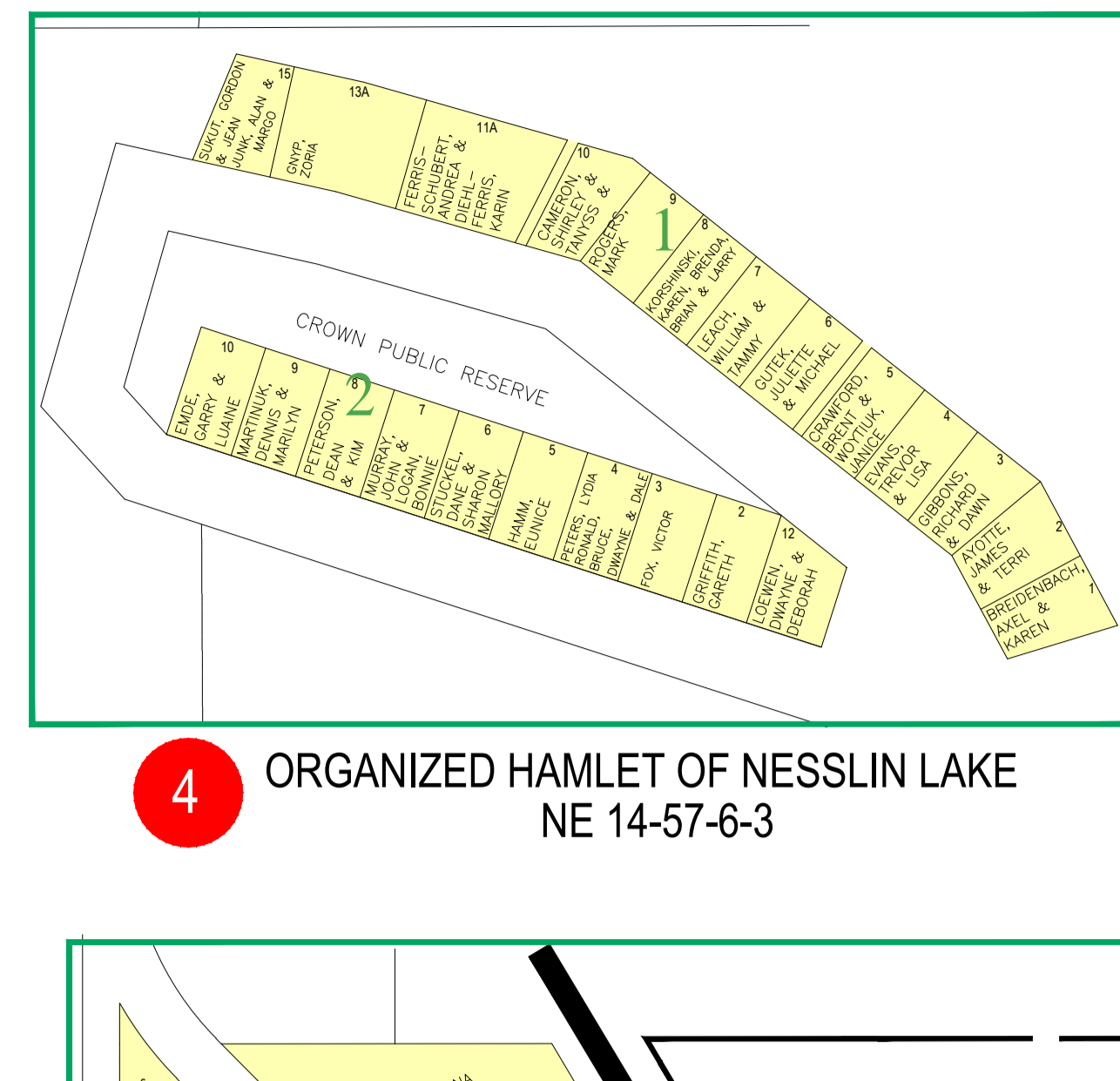
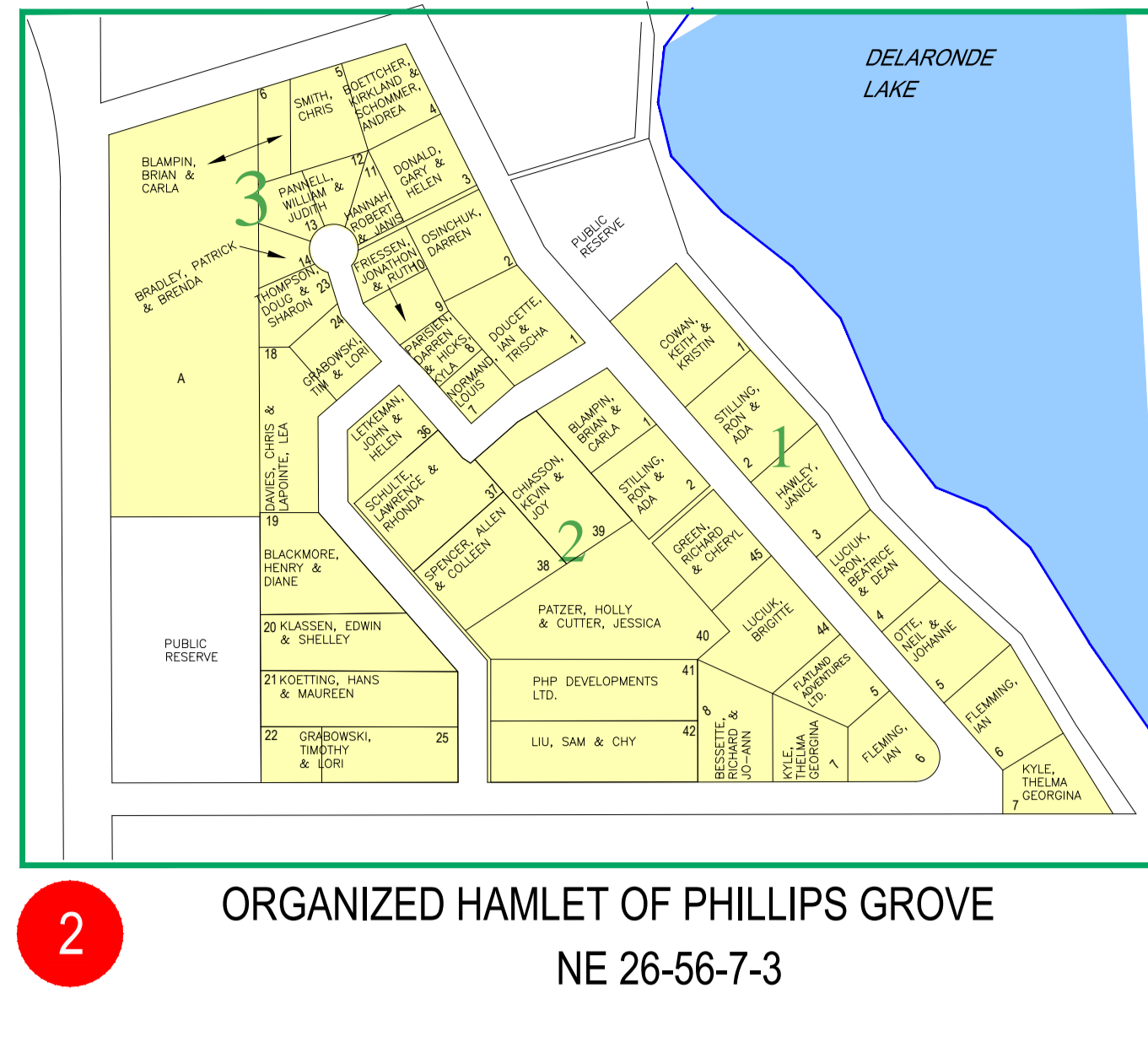
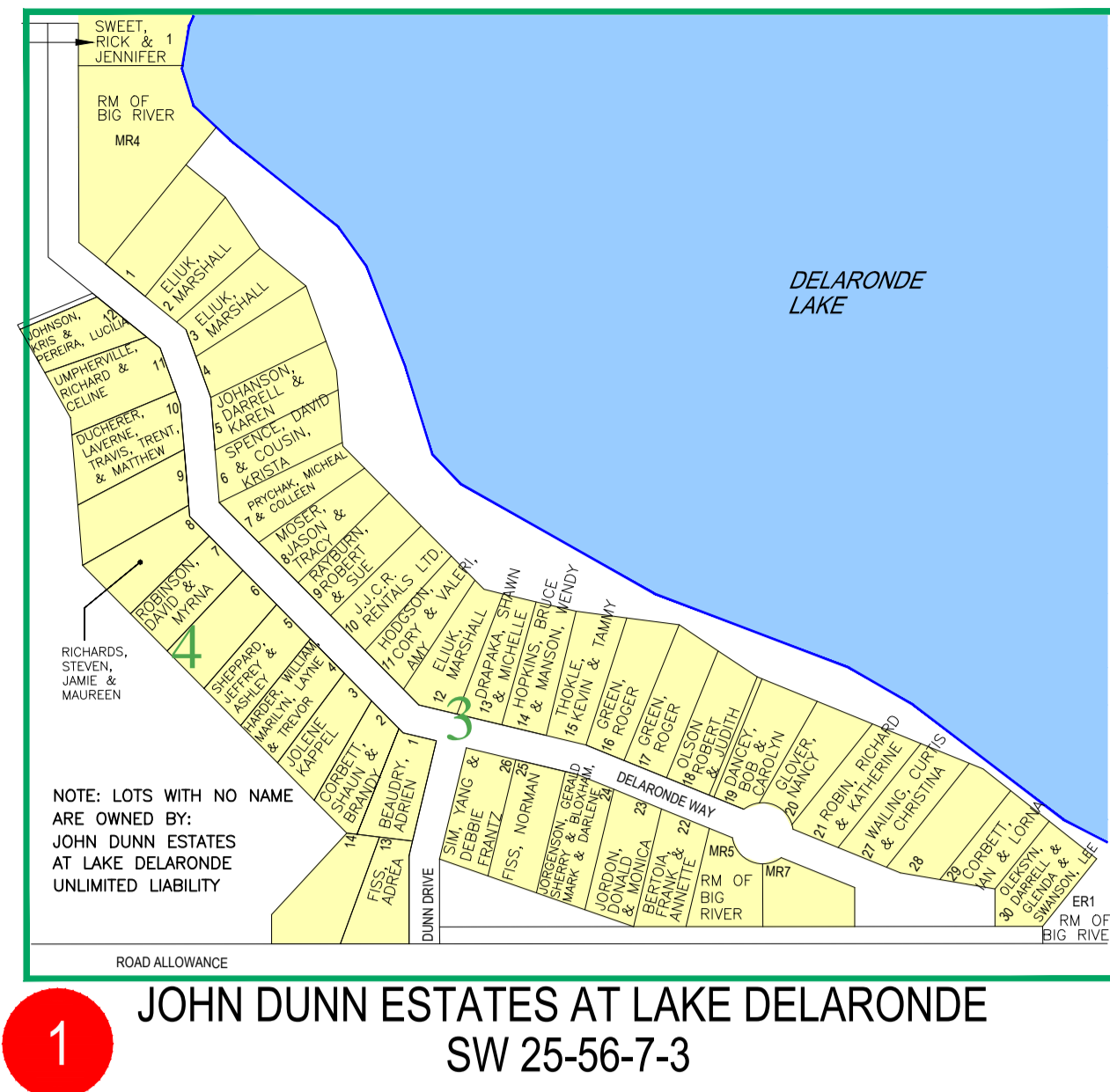


RURAL MUNICIPALITY OF BIG RIVER No. 555 SUBDIVISION DETAILS

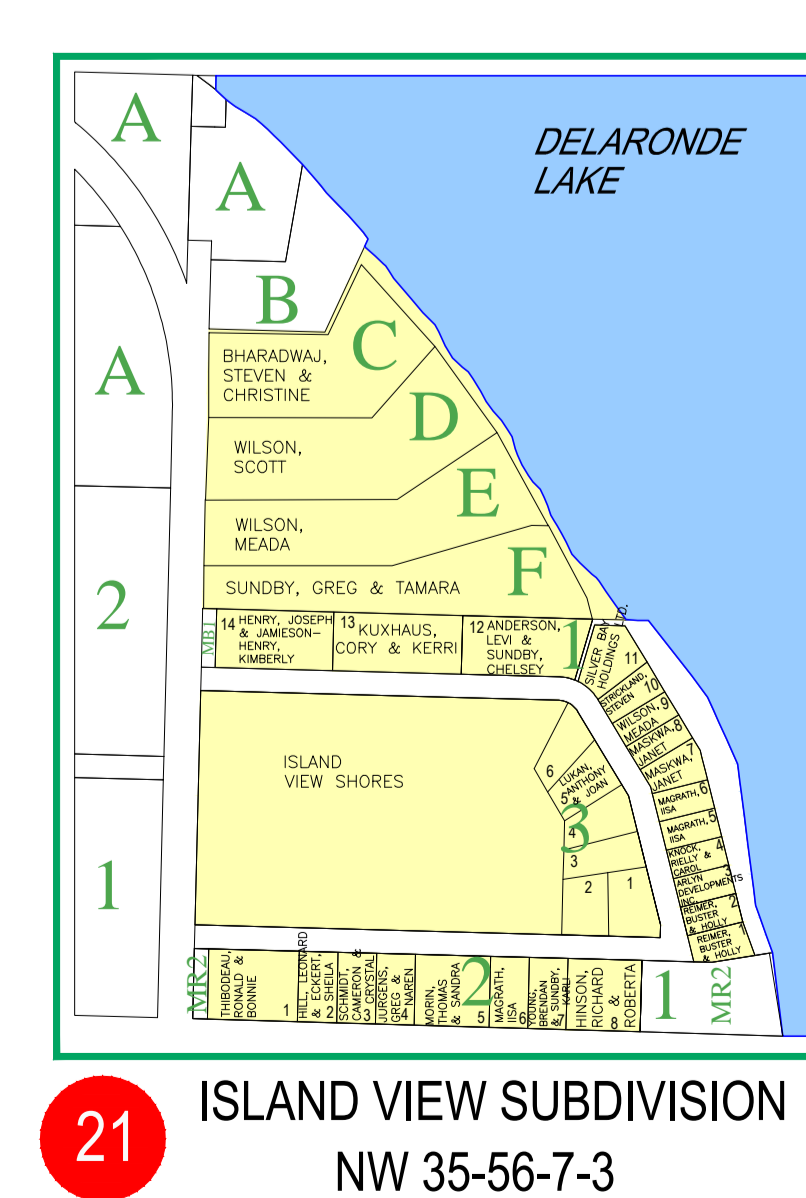
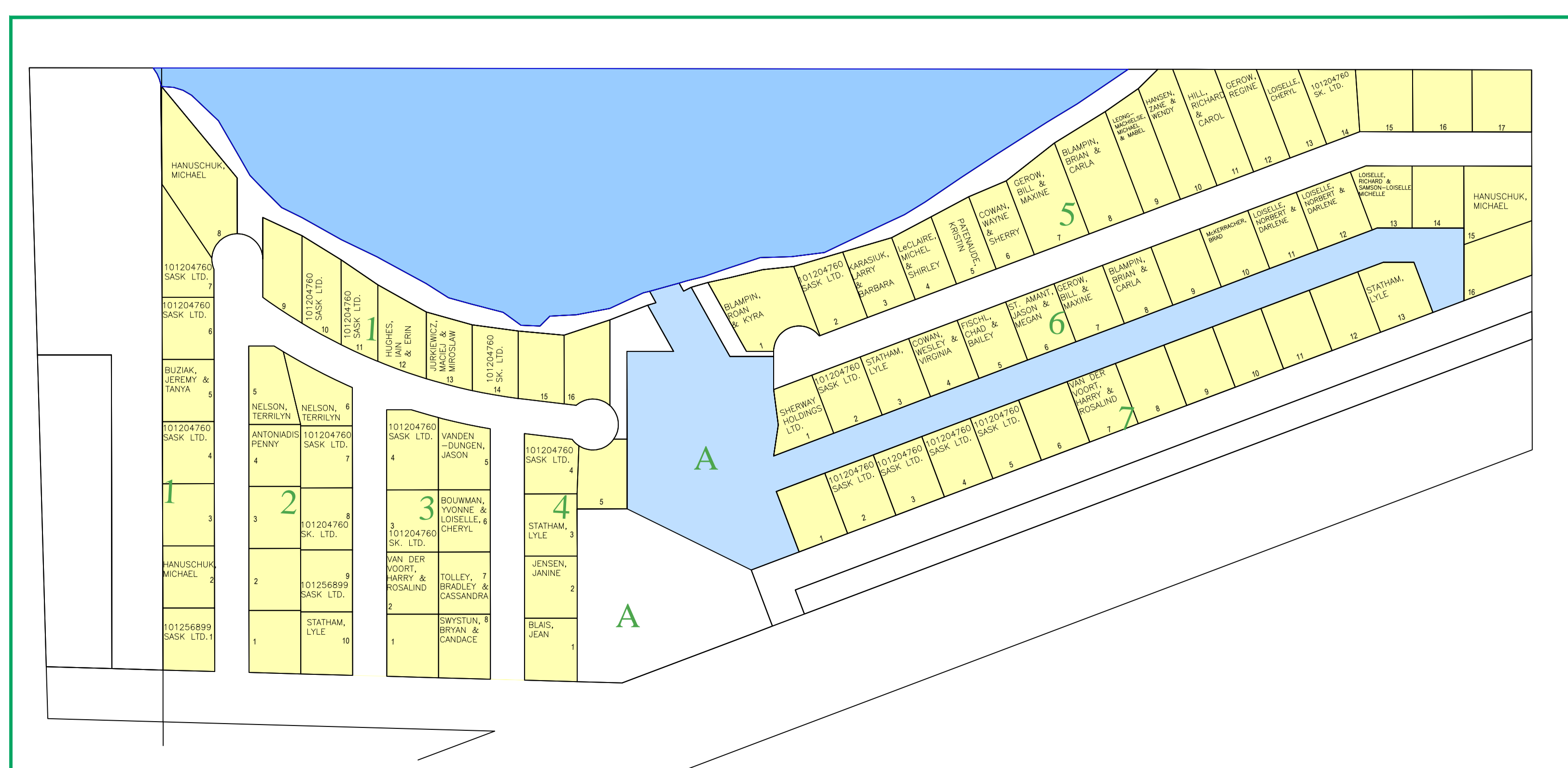
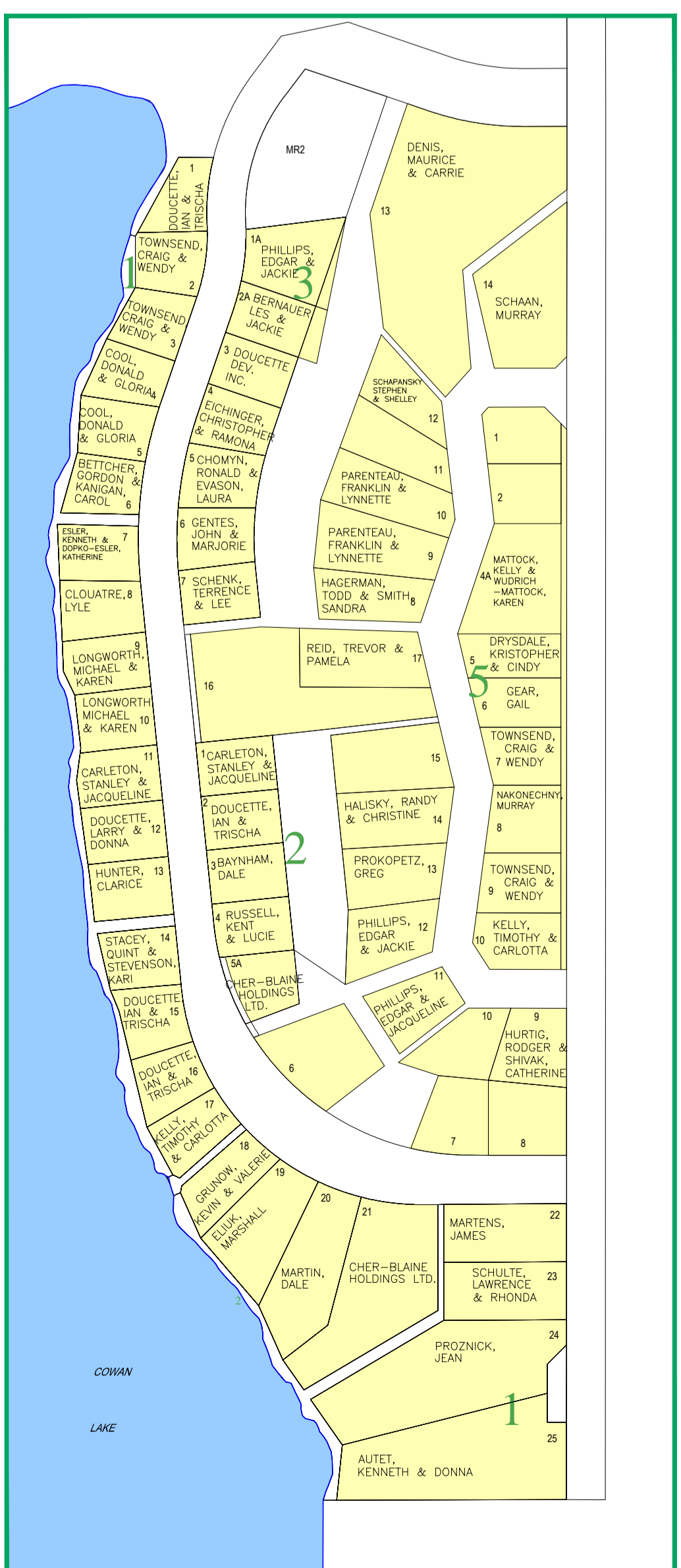
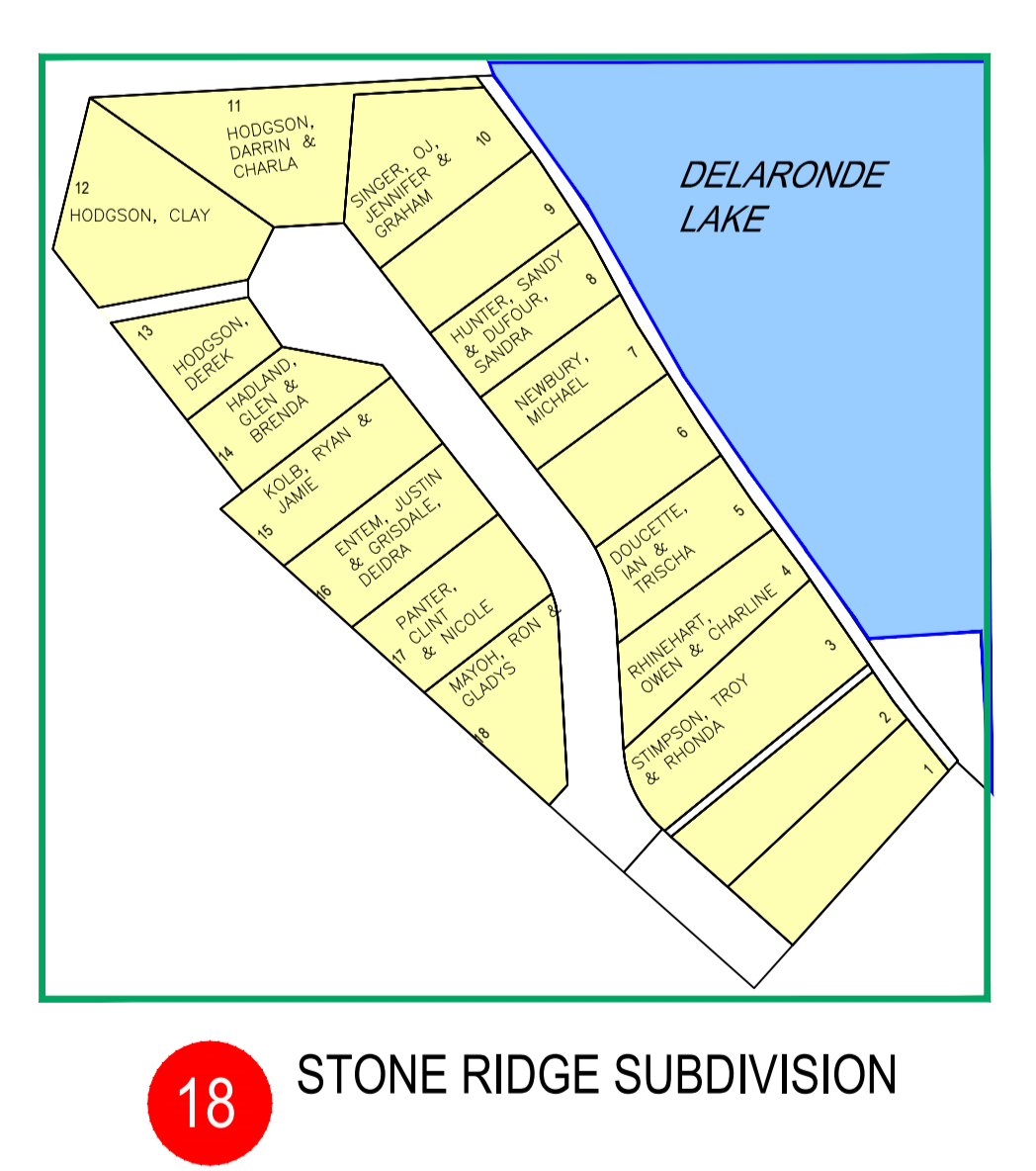
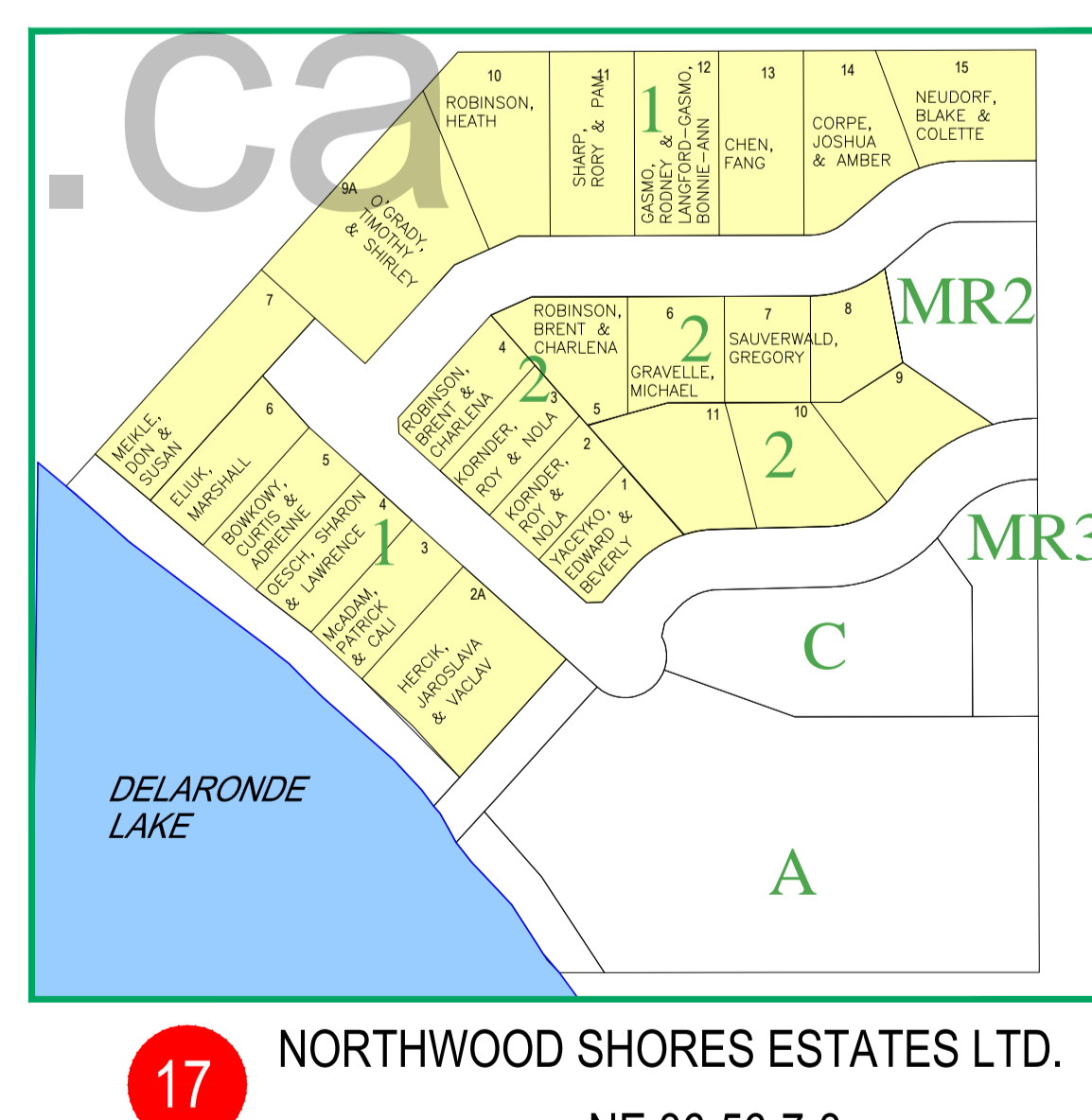
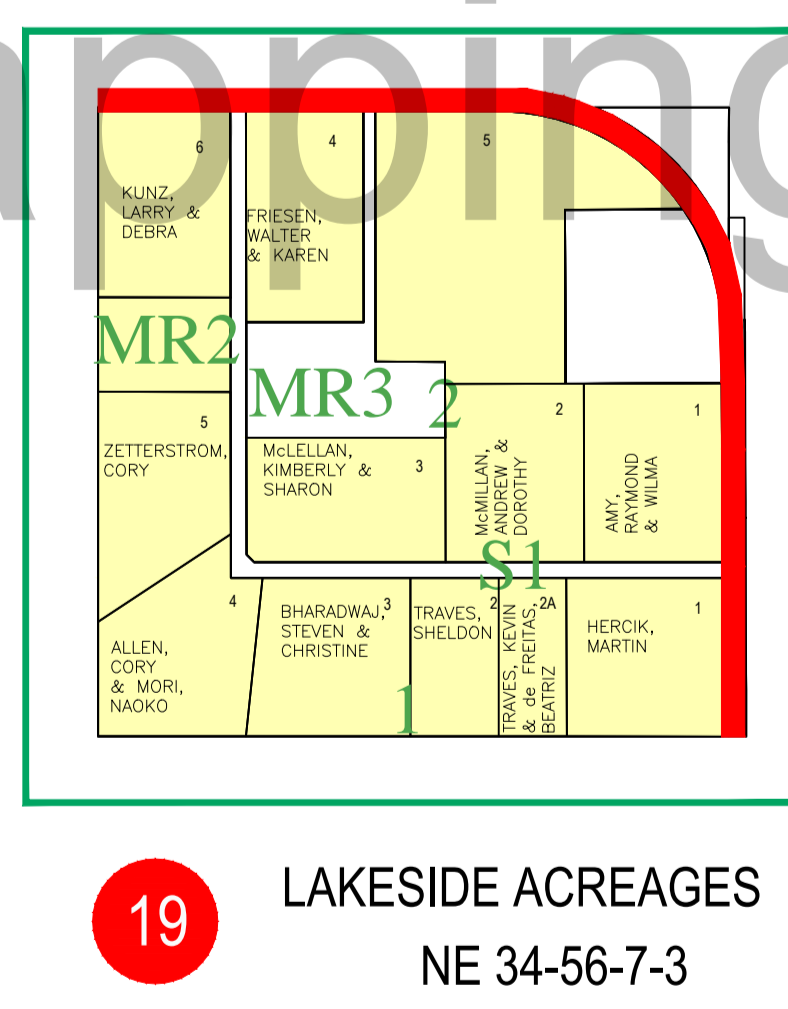
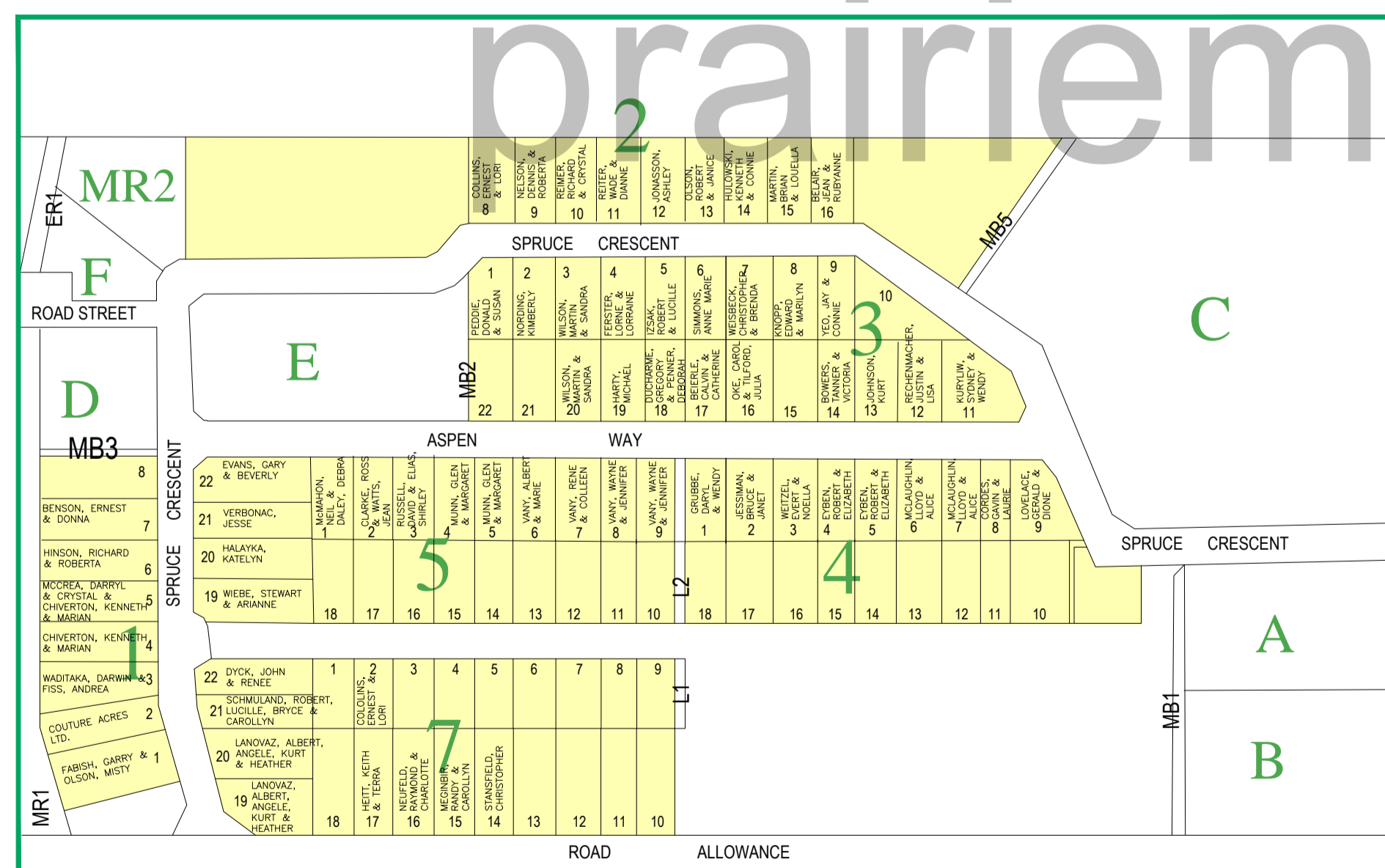
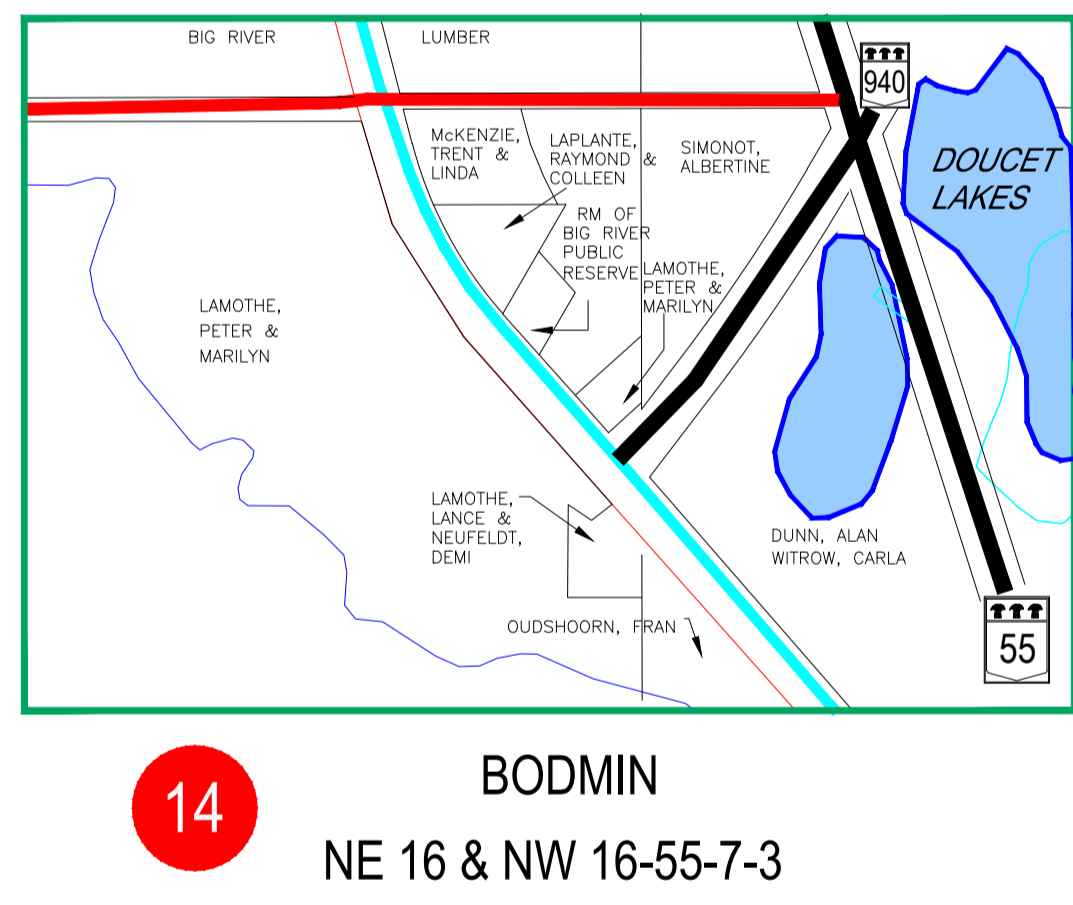
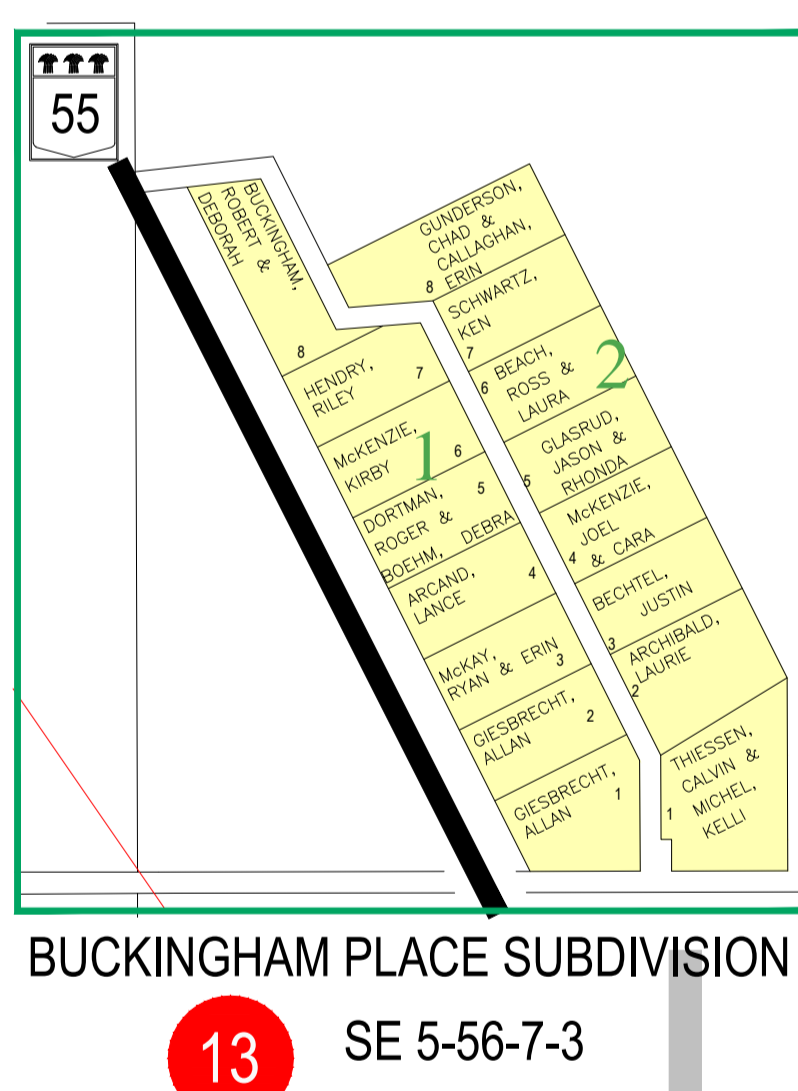
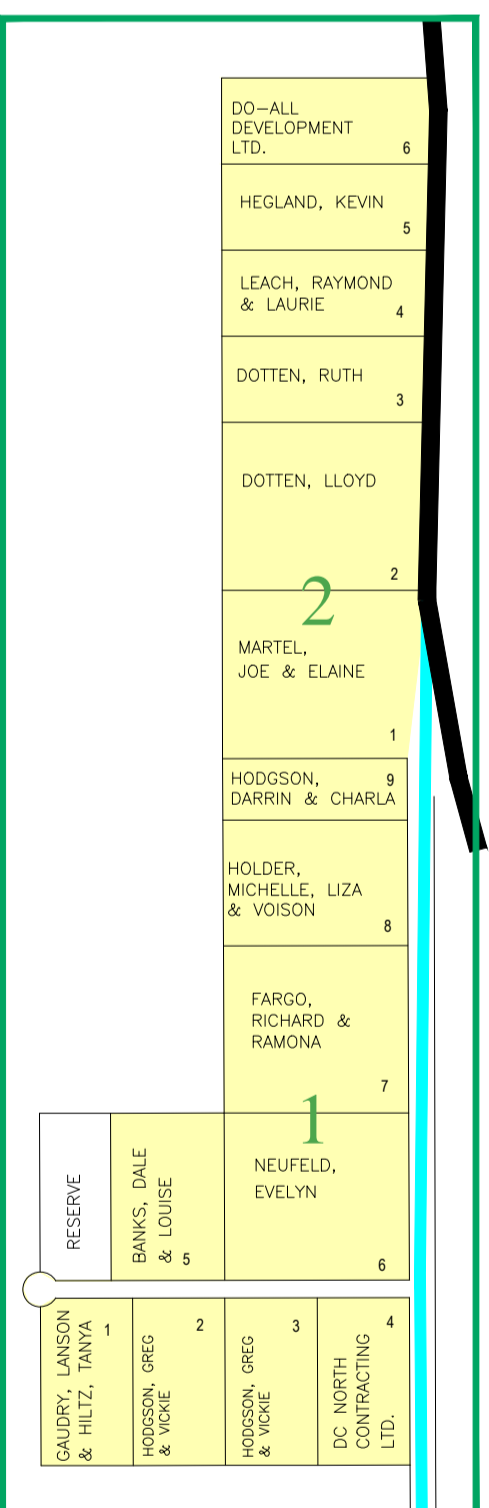
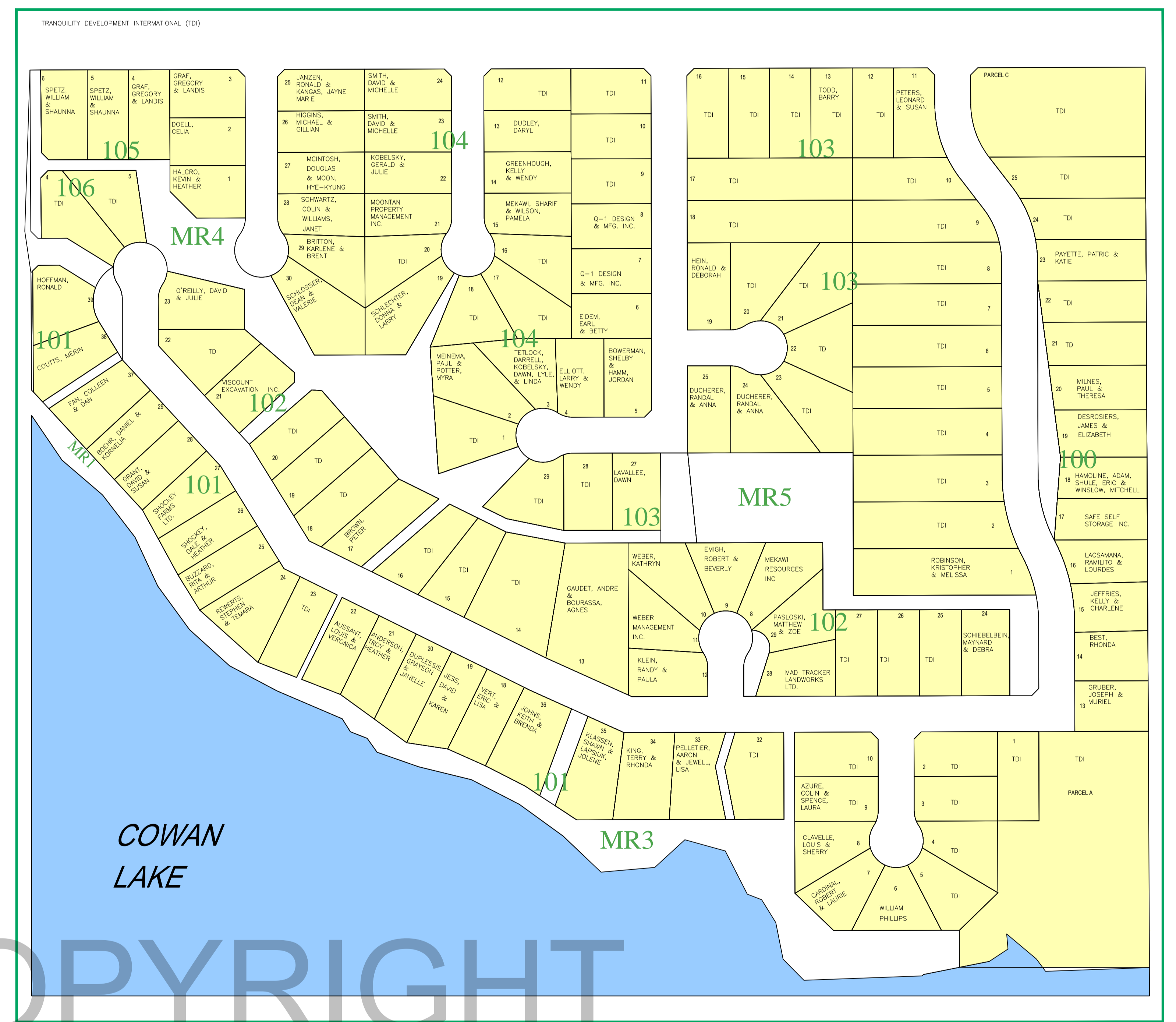
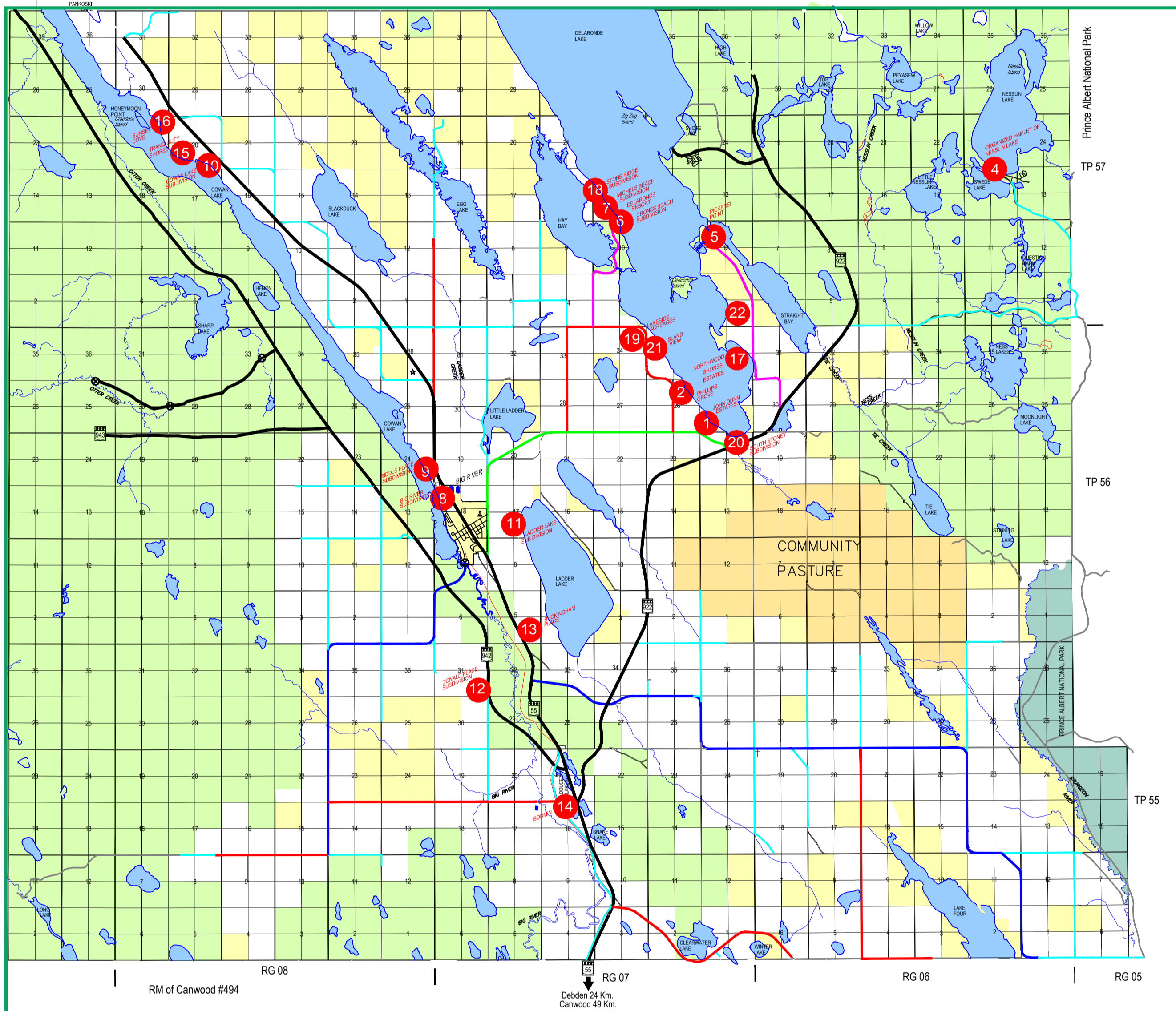
TERMS OF USE - WEBSITE RELEASE
THIS FILE IS FOR THE EXCLUSIVE WEBSITE USE FOR RM OF BIG RIVER NO. 555 UNDER THE TERMS OF THE COPYRIGHT DECLARATION. THIS FILE IS NOT AUTHORIZED FOR DISTRIBUTION TO ANY THIRD PARTY SOURCES. WEBSITE AGREEMENT FILE NO. P1070-20100605. FAILURE TO FOLLOW THESE TERMS AND CONDITIONS MAY RESULT IN CRIMINAL PROSECUTION.
DATE: 2019/04/26 UNDER COPYRIGHT www.pmi.ca

ADMINISTRATOR - DONNA TYMIAK
BOX 219, BIG RIVER SK S0J 0E0
PHONE (306) 469-2323
FAX (306) 469-2428
email rm555@sasktel.net

WEST OF THE THIRD MERIDIAN



LOCATION PLAN



LEGEND

- Highway
- Surfaced Road
- Primary Grid
- Special Road
- Grid Road
- Main Farm Access
- Municipal Road
- Private Road
- Prairie Trail
- Regional Park
- Lagoon
- Lake
- Creek
- Bridge
- Waste Disposal Site
- Airstrip
- Hamlet
- City, Town, Village
- Crown Land
- Prince Albert National Park
- Community Pasture
- Provincial Forest Reserve

PRAIRIE MAPPING INDUSTRIES LTD.
Box 40, Theodore SK S0A 4C0
Phone (306) 647-2350
Fax (306) 647-2355
Website www.prairiemapping.ca
Specializing in G.I.S. Mapping Applications

Revised by: Colleen Blaknell March 27, 2019
Redrawn by: Margaret Harvey July 7, 2008
Original Drawn by: Bruce Fredericksen May 7, 2002